

A few notes about PDF patterns. . . .

This PDF pattern prints on regular letter size paper (8.5" x 11").

Patterns containing larger pieces will need to be taped together before cutting out the fabric.

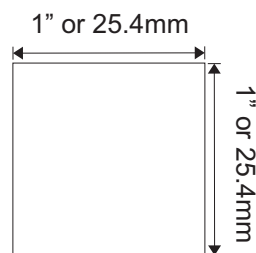
Be advised that this document needs to be printed to it's original scale. Please ensure that the printing options below are **not** selected.

Do Not: Rotate and Center, Fit to Page, Reduce to Fit or adjust the scale of this document.

Refer to the scale marker below to ensure that this copy is printed at the correct scale.

This PDF pattern is not licensed for commercial use and may not be shared, duplicated or distributed.

Designs by Jude, All RIGHTS RESERVED. Personal use only. Not licensed for commercial use.



Designs by Jude

www.fletcherpatterncompany.com



VDC Club Grace

Big Adventure
for 16.5" RTB101 Dolls



Designed by

Tamara Casey

\$12.95



2024 Designs by Jude, All RIGHTS RESERVED. Personal use only.

VDC Club Grace Collaboration

Big Adventure

For 16.5" RTB101 Grace Dolls

Basic Instructions

You will get the most professional results by following a few recommendations.

- *Use a ¼" seam allowance unless noted otherwise on the pattern piece or instructions. This seam allowance is already included in the dimensions of the pattern.*
- *Press the garment as you work through each step. Press seams open where applicable.*
- *In un-lined garments, finish raw edges with an over-lock or zigzag stitch.*
- *Note that RST = Right Sides Together and WST = Wrong Sides Together.*

Fabric and Notions

Outfit: brushed cotton, woven or similar

Notions: matching thread, snap sets, tiny buttons, fusible interfacing, eyelets, eyelet washers, thin cord

Dress

1. Right sides together, sew the center back seam. Press the seam open.
2. RST, sew the side back sections to the back section. Press the seams open.
3. RST, sew the side front sections to the front sections. Press the seams open.
4. Right sides together and matching seams, sew the back and front pieces together at the shoulder seams. Press the seams open.
5. Fold the sleeve cuffs in half lengthwise with the right sides out. Press.
6. Place the sleeve cuffs on the wrong side of each sleeve and sew them in place.
7. Trim down the seam allowance and press the cuffs to the right side of the sleeves.
8. RST, pin the sleeves to the armhole openings and sew them in place.
9. Clip and trim the seam allowance.
10. Fold the collar in half and sew each short end, leaving the neck edge unsewn.
11. Trim down the seam allowance, turn the collar right side out, and press.
12. Baste the raw edge of the collar together.
13. Matching notches, center the collar on one side of the collar stand, and pin it in place.
14. Place the second collar stand on top with the collar sandwiched between the two.
15. Sew around the curved edge leaving the neck edge unsewn.
16. Clip and trim the seam allowance. Turn the assembly right side out and press.
17. Baste the raw edge of the collar stands together.
18. Match the center of the collar to the center back seam of the dress. Pin in place and baste.
19. RST, sew the center back seam of the dress facing. Press the seam open.
20. Zigzag or serge the outer edge of the facing.
21. RST, pin the facing to the dress and sew up the front and around the neck.
22. Clip and trim the seam allowance, turn the facing to the inside, and press.
23. RST, sew the front and back together at the side seams. Press the seams open.
24. Turn the hem edge of the dress up ¼" and press. Sew the hem.
25. Prepare the hip pocket by folding each in half horizontally and sewing a seam ½" from the folded edge.
26. Flatten the seam open and press. Turn the sides and lower edge under and press.
27. Cut a piece of fusible interfacing a bit smaller than the finished pocket and press to the wrong side to hold the folds in place.
28. Prepare the breast pocket flaps and the hip pocket flats in the same way.
29. Position the hip pocket on each side of the dress front. Sew them in place.
30. With the wrong side up, place the hip pocket flaps at the top of the hip pocket, and sew.
31. Fold the flaps down over the pockets and topstitch.
32. Fold the top raw edge of the smaller flaps under, press, and position on the dress. Sew in place.
33. Fit the dress to the doll and mark the placement for the snaps.
34. Sew the snaps in place.
35. Add decorative buttons to the front, hip pockets, and flaps.
- 36.

Hat (fuse interfacing to the fabric before cutting out the hat pieces)

1. Apply an eyelet to each hat crown piece.
2. RST, sew three of the hat crown pieces together.
3. Sew the second set of three together.

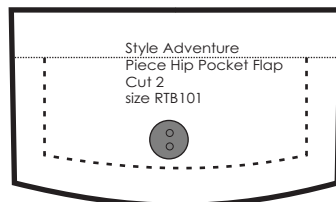
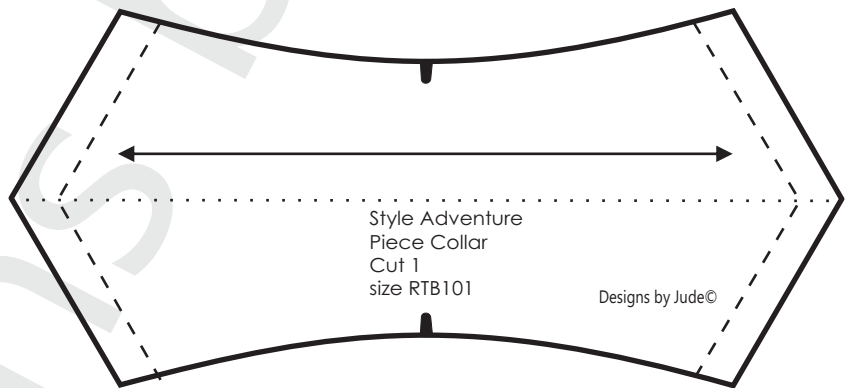
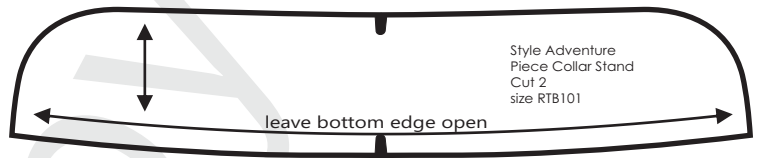
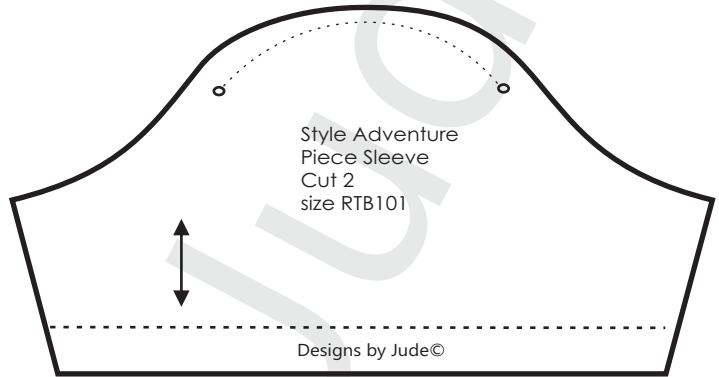
4. RST, sew both sides of the crown together.
5. RST, sew the center back seam of each brim piece. Press the seams open.
6. With the right sides together and matching the seam, pin both brim pieces together.
7. Clip and trim the seam allowance, turn the brim right side out, and press.
8. Take several small clips into the inner circle of the brim.
9. Lining up one of the crown seams to the brim seam, sew the two pieces together.
10. Zigzag the raw edge for a clean finish.
11. Add three rows of topstitching around the brim.
12. Attach a thin cord through two of the eyelets of the hat on each side to make the chin strap.

There is a sewing tutorial for this pattern on our Designs by Jude YouTube channel.
www.fletcherpatterncompany.com

VDC Collaboration

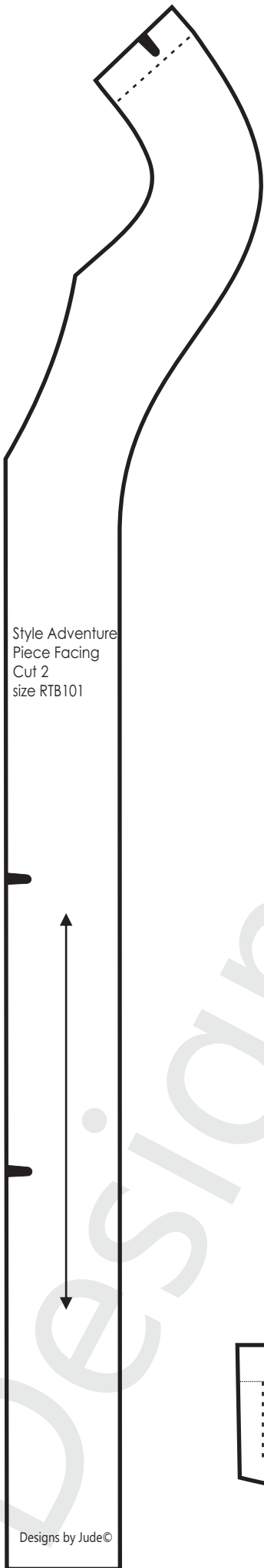
Big Adventure

for RTB101 body dolls



Fold Line
Stitch Line - - - - -
Grain Line ← →
Notch ■ Dot ⊙ Snap ⊗

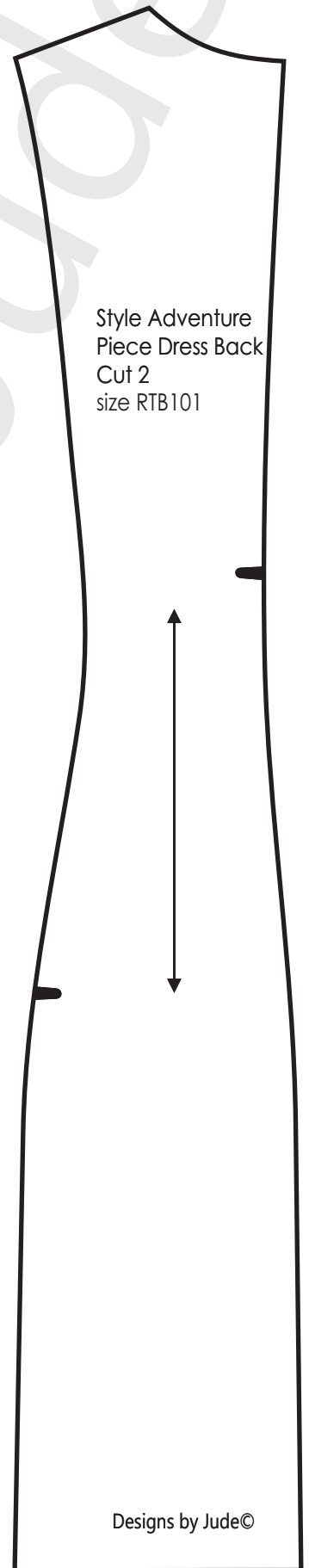
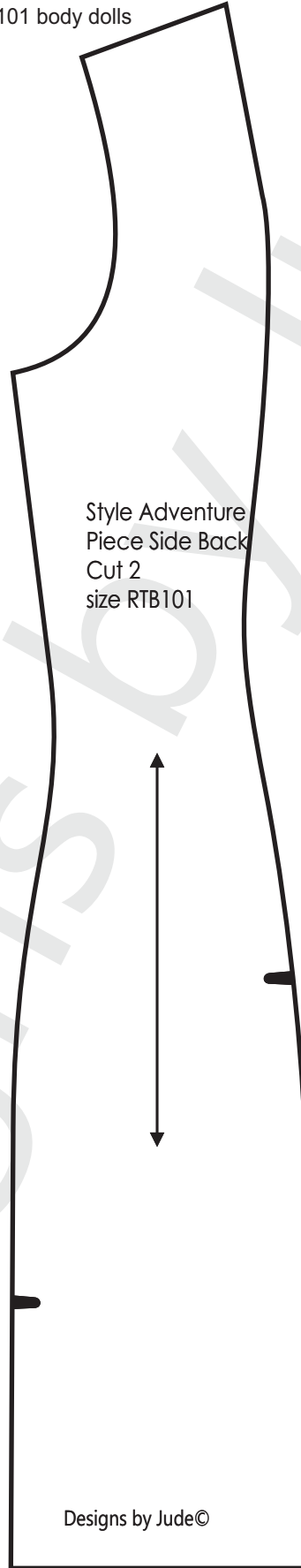
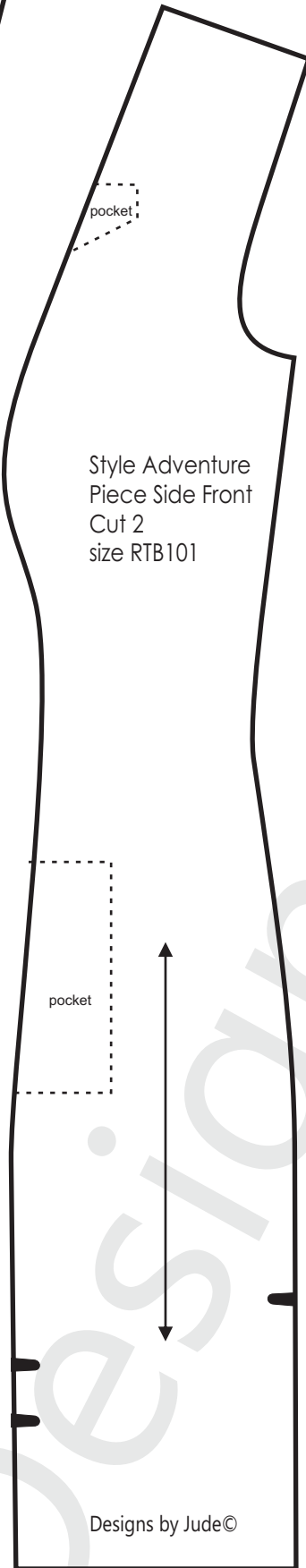
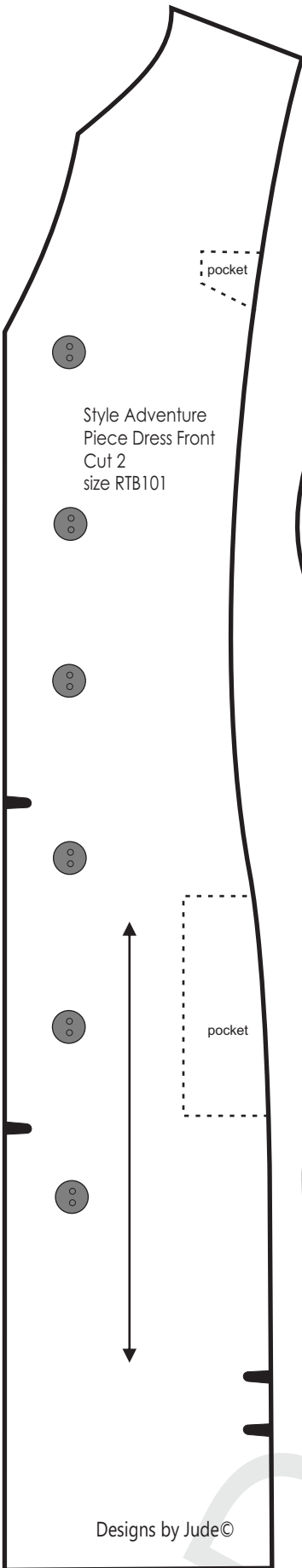
Seam allowance of 1/4" is already included in the dimensions of the pattern



VDC Collaboration

Big Adventure

for RTB101 body dolls



VDC Collaboration

Big Adventure

for RTB101 body dolls

