

# Virtual Doll Convention + My Stitchin Dolliverse Neema Dress Pattern Collaboration

For 16 inch Neema and Ellowyne Wilde Dolls

1970's Foxy Brown Inspired Dress

## Sewing Notes:

- 1/4" seam allowance throughout Except for bodice neckline 1/8" that tapers to zero at center front neck.
- Finish garments with zig zag, fray check or serge
- Video instructions available on the VDC channel @RachelHoffmanDolls and my YouTube channel @MyStitchinDolliverse

## Abbreviations:

- CF: center front
- CB: center back
- RST: right sides together
- WST: wrong side together
- SA: seam allowance
- RS : right side
- WS : wrong side
- TS : top stitch

## Fabric and Notions:

- Dress: stretch velvet, polyester lightweight stretch fabrics
- Notions: 3/0 snap set, matching thread
- Fray check (optional)

## Cut pieces:

- 1 front bodice on the fold
- 2 back bodices
- 1 skirt on the fold (cut and tape pattern together first)
- 2 sleeves

## Sequence of Construction:

1. Sew front bodice to back bodices at shoulders RST. Trim SA
2. Stay stitch neckline  $\frac{1}{8}$  inch to zero at CF neckline. clip curves
3. Fold neckline to WS and TS  $\frac{1}{8}$  inch. tapering to zero at CF. Trim SA
4. Sew sleeves to bodice at armhole (armhole) RST  $\frac{1}{4}$  inch. Trim SA
5. Hem sleeves. fold  $\frac{1}{4}$  inch to WS and TS
6. Sew both underarm seams RST  $\frac{1}{4}$  inch and bodice side seams RST  $\frac{1}{4}$  inch. Trim SA
7. Sew skirt to bodice at waist matching CF of bodice to CF of skirt. RST  $\frac{1}{4}$  inch. Trim SA
8. Sew CB of dress RST  $\frac{1}{4}$  inch. starting at the hem and sew up to  $\frac{3}{4}$  inch under the waist seam
9. (Optional front skirt slit) draw line on left front side (wearing) skirt (indicated on pattern)  
Stay stitch on both sides of skirt slit line with a small stitch. Cut up the line. Can fray check line.
10. Fold up  $\frac{1}{4}$  inch at skirt hem and TS or fray check the raw hem
11. Fold under  $\frac{1}{4}$  inch right side bodice center back to WS and TS
12. Sew snaps at CB: one set at waist, one set at top CB neckline and one set in between the neck and waist

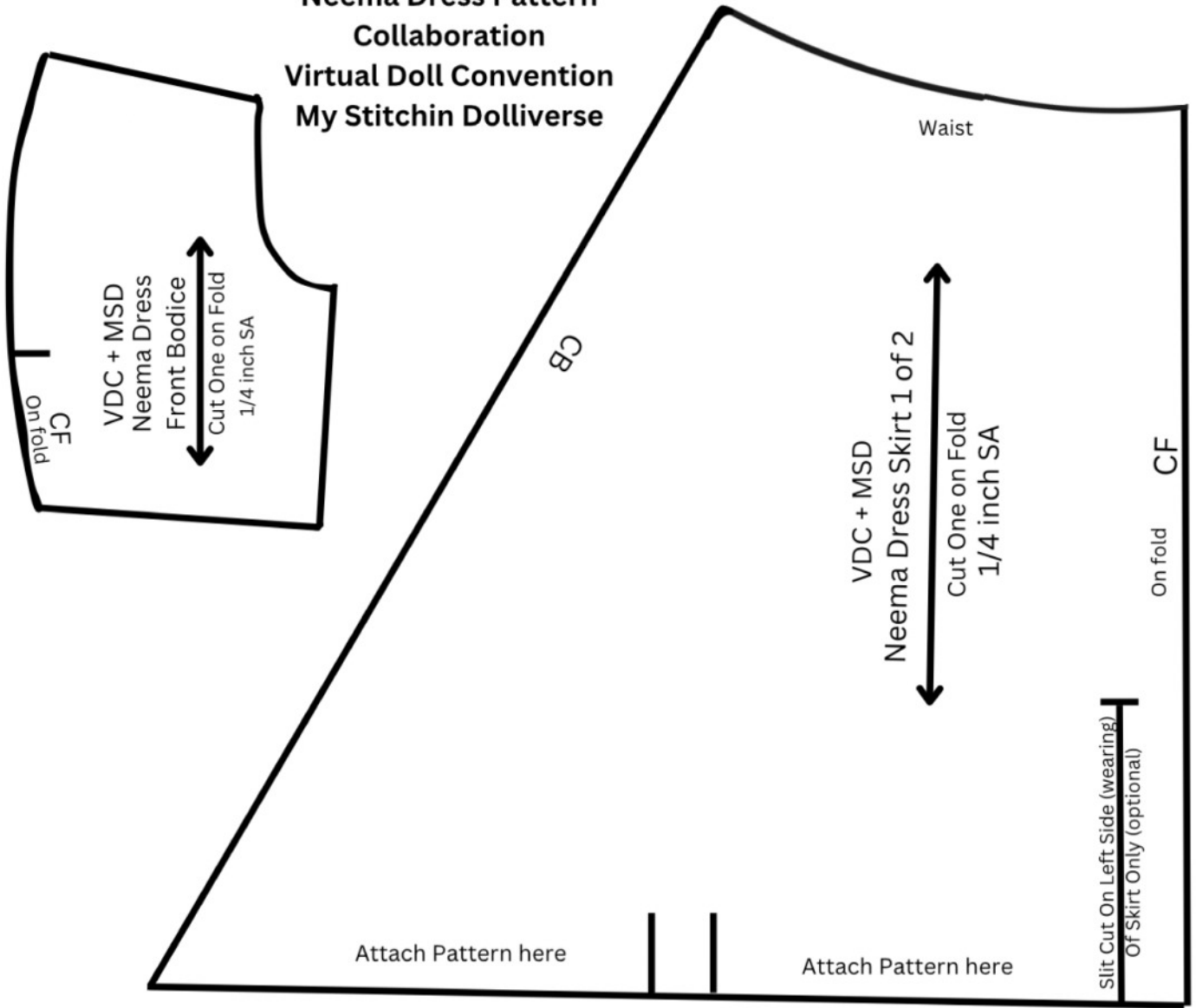
## Notes:

- Print on 8  $\frac{1}{2}$  X 11 inch paper
- Please Do Not resize
- Tape together pattern pieces as instructed
- This pattern is not licensed for commercial use and may not be shared, duplicated or distributed.



**Virtual Doll Convention + My Stitchin Dolliverse**

Neema Dress Pattern  
Collaboration  
Virtual Doll Convention  
My Stitchin Dolliverse



Neema Dress Pattern  
Collaboration  
Virtual Doll Convention  
My Stitchin Dolliverse

